

### HIGH PRESSURE - 3 PIECE CONVENTIONAL BORE

## Petro-Seal Series

### Models:

NPT - T308

SW - S308

BW - B308

3000 PSI

6000 PSI Optional C/F

WCB or 316SS

Size: 1/4" thru. 2"



A versatile valve which lends itself to any combination of male, female and socket or butt weld end connections. The body features three-piece construction

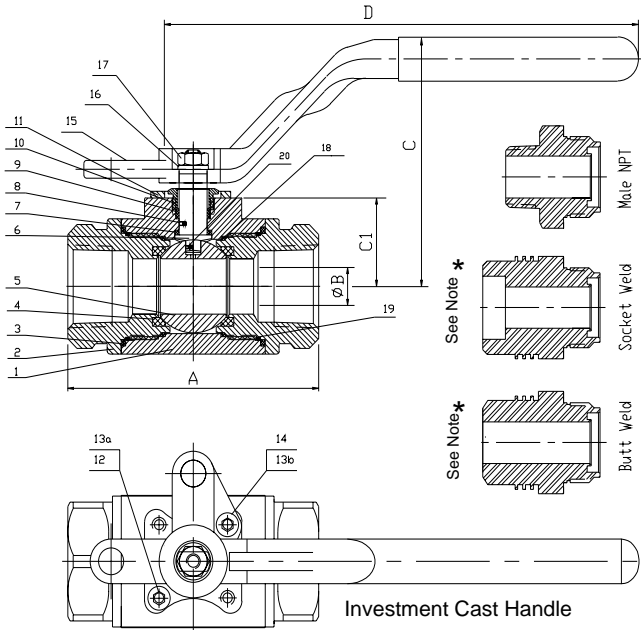
### *Design Features:*

- ISO 5211 Actuator Mounting
- Blow-out Proof Stem Design
- Anti-Static Ground
- 17-4Ph or 316SS Stem
- Foundry Heat Numbers
- NACE MR0175-90
- API 607-4 Fire Safe
- Complies to API 6D
- Optional Seal Weld Body

The petro-seal series valves are equipped with heavy duty durable locking handle as a standard feature. When the lock is employed, the handle can't be removed, it prevents valve operation even if the handle nut is removed! This unique design insures that only authorized personnel can operate the valves. This meets the requirements of OSHA 1910.147

*The Petro-Seal Series is Ideal for tank batteries, manifolds, flowlines, wellheads, hydraulic and many other applications that require higher pressure valves.*

**DESIGN AND TECHNICAL DATA**



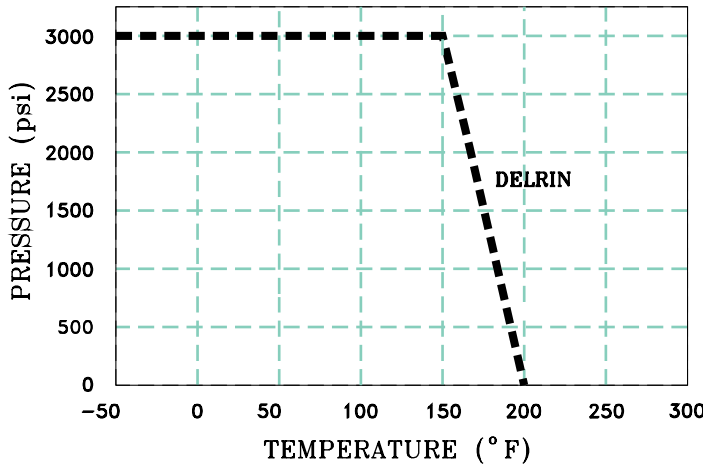
**Model:**

- NPT Threaded - T308
- Socket Weld - S308
- Butt Weld - B308

**BILL OF MATERIALS:**

Item	Part Name	T308SS	T308CS	Qty.
1	Body	A351 CF8M	A216 WCB	1
2	Cap	A351 CF8M	A216 WCB	2
3	Body Gasket #	Graphite	Graphite	2
4	Seat #	DELTRIN	DELTRIN	2
5	Ball	A351 CF8M	A351 CF8M	1
6	Stem	A276 316	A276 316	1
7	Thrust Washer #	RPTFE	RPTFE	1
8	Anti-Static	VITON	VITON	1
9	Packing #	Graphite	Graphite	1
10	Gland Nut	SS304	SS304	1
11	Lock Hole Flange	SS304	SS304	1
12	Spring Washer	SS304	Carbon Steel	1
13a	Cap Screw	SS304	SS304	1
13b	Cap Screw	SS304	SS304	1
14	Spacer	SS304	Carbon Steel	1
15	Handle	A351 CF8M	A216 WCB	1
16	Spring Washer	SS304	Carbon Steel	1
17	Stem Nut	SS304	SS304	1
18	Body Gasket 2 #	PTFE	PTFE	2
19	Body O-Ring #	Viton	Viton	2
20	Anti-Static	SS304	SS304	1

**PRESSURE AND TEMPERATURE DATA:**



# Parts included in the repair kits

Conform to:

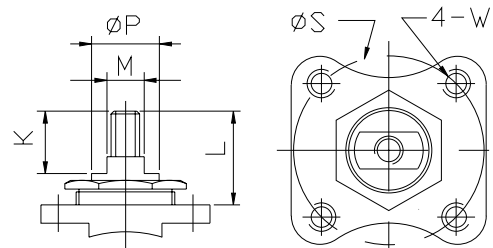
- API STANDARD 6D
- ANSI B1.20.1 Threaded End NPT
- ANSI B16.11 Socket Weld End
- ANSI Class 1500 (3000 WOG)
- Fire Safe Testing API607

**Seat Test:**

Air under water at 80 - 100 PSI

Test Pressure: Shell 4,500 Psi  
Seat 3,300 Psi

**MOUNTING DIMENSIONS:**



**DIMENSIONS AND WEIGHTS:**

SIZE	A NPT	A BW & SW	A Male NPT	B	C	D	C1	K	L	M	P	S	ISO 5211	W	Cv	Torque In-Lb	Weight Lbs NPT
1/2"	3.86	5.00	4.72	0.50	2.95	6.50	1.07	0.45	0.98	0.26	0.39	1.42	F03	M5	14	70	2.2
3/4"	4.25	6.73	5.51	0.69	3.54	8.07	1.30	0.55	1.18	0.33	0.47	1.65	F04	M6	35	130	3.3
1"	4.25	6.73	5.91	0.88	3.66	8.07	1.41	0.55	1.18	0.33	0.47	1.65	F04	M6	60	160	4.0
1-1/2"	5.24	8.54	7.48	1.25	4.88	10.04	2.03	0.79	1.57	0.44	0.63	1.97	F05	M6	190	530	8.8
2"	6.26	8.54	7.87	1.50	5.12	10.04	2.22	0.79	1.57	0.44	0.63	1.97	F05	M6	310	530	12.5

\* Weld End Valves are supplied on a project basis only

This brochure is general in nature and manufacturer reserves the right to alter dimensions, materials or to make design improvements