

ISO 5211 ACTUATOR MOUNTING

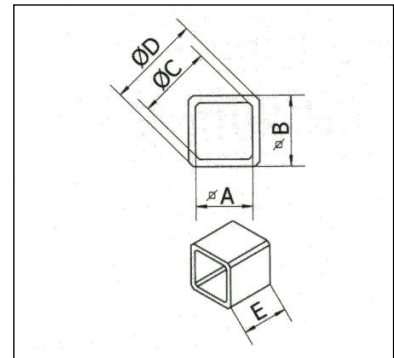
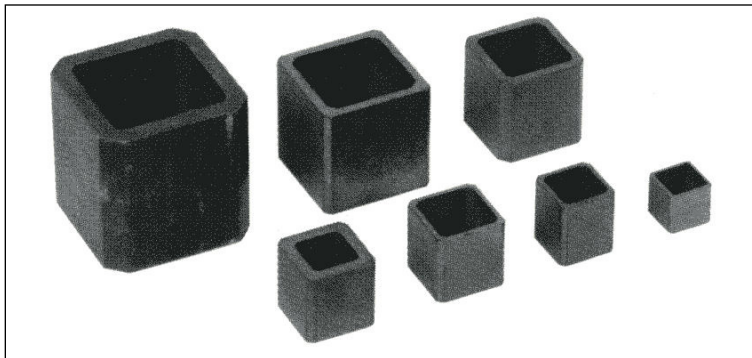
The International Standards Organization has developed dimensional standards to facilitate the direct mounting of actuators to all types of valves. This concept was developed to benefit of the valve industry end users. Flo-Tite provides both a direct mount ball valve and a bracket mount design. Most ball valve manufactures in the USA use an ISO 5211 bolt circle for their mounting top pad flange dimensions.

F-Number	MM	Inch	# of Bolts
F03	36	1.41	4
F04	42	1.65	4
F05	50	1.97	4
F07	70	2.76	4
F10	102	4.01	4
F12	125	4.92	4
F14	140	5.52	4
F16	165	6.50	4
F25	254	10.0	8
F30	298	11.73	8
F35	356	14.01	8
F40	406	15.98	8
F48	483	19.01	12
F60	603	23.74	20

Popular star or square drive patterns "V" Flats for ISO actuators

Inch
0.35
0.43
0.55
0.67
0.87
1.06
1.42
1.81
2.16

Actuator standardization in the real world is not an easy feat. Low air supply, differential pressure, seat material, media type and temperature will effect the actuator selection. For these reasons and user convenience, the square insert adapter was designed. This will allow for the use of larger sized actuators while still complying with the ISO 5211 mounting designs.



Part No. #	A (ID)	B (OD)	ØC	ØD	E
SQ1109	0.35	0.43	0.48	0.56	0.39
SQ1411	0.43	0.55	0.56	0.71	0.63
SQ1711	0.43	0.67	0.56	0.87	0.67
SQ1714	0.55	0.67	0.72	0.87	0.67
SQ2217	0.67	0.87	0.88	1.10	0.87
SQ2722	0.87	1.06	1.12	1.42	1.06
SQ3627	1.06	1.42	1.42	1.77	1.42