

Flo-Tite, Inc.

Valves & Controls

WAFER/FLANGED FULL BORE BALL VALVE

Kompact Series

A compact valve designed for applications where space & weight are of critical concern.



Models:
W150SS / W150CS
Sizes 2", 3", 4"
316SS or WCB

DESIGN FEATURES

- The valve body is tapped allowing use of cap screws to install valve between ANSI 150 LB flanges

Optional

- Transmitter Isolation 45° Handle for fitting insulation recess
- Pocket Less Design supplied with cavity fillers

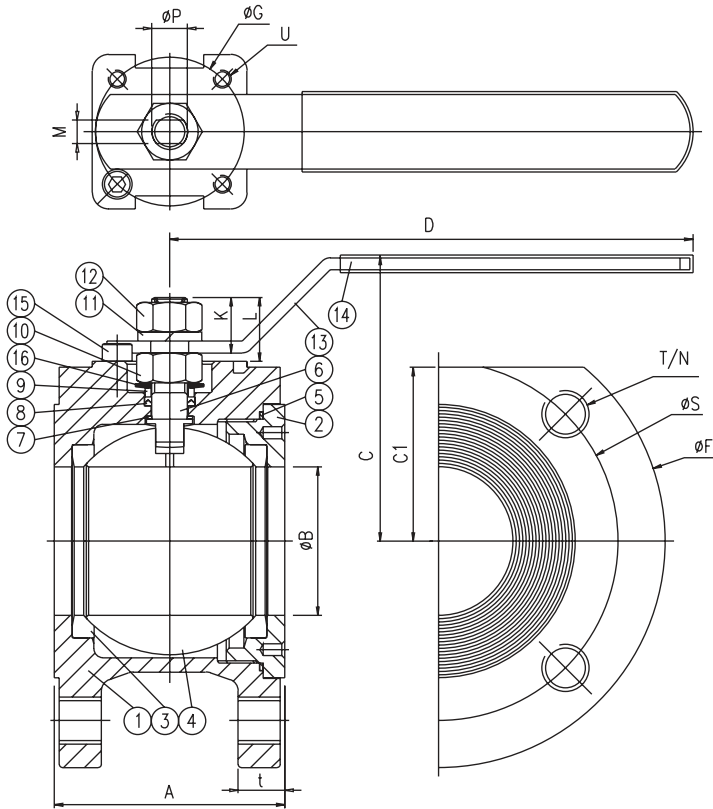
Ideal Design for Control Valve

- Compact Control Package
 - Economical Low Operating Cost
- Characterized Linear, V or Slotted Ball Design to meet your custom flow requirements

- Full Port Design
- Blow-out Proof Stem Design
- Anti-Static Ground
- Double "D" 316SS, 304 or 17-4Ph
- Foundry Heat Numbers
- ISO 5211 Mounting Pad
- Super-Tek Seating
- Low-Torque Design
- Live loaded stem design

The Kompact Series is Ideal for control, modulating and many other applications that may require specially low profile valves.

Design & Technical Data



Kompact Series
Wafer Type Ball Valve

Models:

Stainless Steel W150-SS
Carbon Steel W150-CS

BILL OF MATERIALS:

Item	Part Name	W150SS	W150CS	Qty.
1	Body	A351 CF8M	A216 WCB	1
2	Retainer	A351 CF8M	A216 WCB	2
3	Seat #	TFM1600	TFM1600	2
4	Ball	A351 CF8M	A351 CF8	1
5	GASKET #	TFM1600	TFM1600	1
6	Stem	A276 316	A276 304	1
7	Thrust Washer #	TFM1600	TFM1600	1
8	Packing #	TFM1600	TFM1600	1
9	Packing Follower	SS304	SS304	1
10	Packing Nut	SS304	SS304	1
11	Handle Washer	SS304	SS304	1
12	Handle Nut	SS304	SS304	1
13	Handle	SS304	SS304	1
14	Handle Cover	PVC	PVC	1
15	Handle Stopper	SS304	SS304	1
16	Belleville Washer	SS301	SS301	2

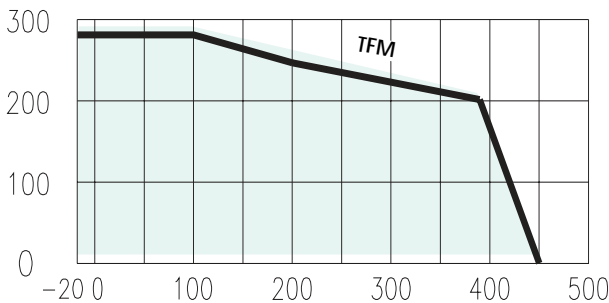
Parts included in the repair kits
Consult Factory for V-ball options

Dimensions & Technical Data

Size	A	B	C	C1	D	F	G	K	L	M	N	P	S	t	T	ISO Pad	U	Cv	Torque In-Lb	Weight Lbs
2"	3.05	1.97	3.76	2.38	6.89	6.00	1.97	0.75	0.62	0.31	4	0.47	4.75	0.62	5/8"-11UNC	F05	M6	480	300	11
3"	4.57	2.99	6.06	3.54	9.57	7.50	2.76	0.87	1.56	0.47	4	0.75	6.00	0.75	5/8"-11UNC	F07	M8	1150	750	26
4"	5.91	3.78	6.59	4.49	11.22	8.66	2.76	1.06	1.32	0.47	8	0.75	7.50	0.94	5/8"-11UNC	F07	M8	1850	1000	44
6"	7.17	5.31	7.80	5.12	18.11	11.0	4.92	0.95	C/F	0.79	8	1.06	9.50	1.00	3/4"-10UNC	F12	M12	4800	2018	84

Other Sizes On Application: Consult Factory

Pressure & Temperature Rating:



All Valves 100% Hydrostatically Pressure Tested in Open and Closed Position

Class 150 Test Pressure:

Shell 425 Psi Seat 80 Psi (air)

Technical Specifications	
Body Wall Thickness	ASME B16-434
Body Bolting	ASME B16-434
* Fire Safe	API 607 4th Edition
Testing Standard	ASME B16-434, API598
NACE	MR-01-75

* Fire Safe Valves require grafoil packing

Transmitter Isolation Option

Valve flange machined to 26 - 28° knife gate offset tank end.
45° handle for insulation recess.